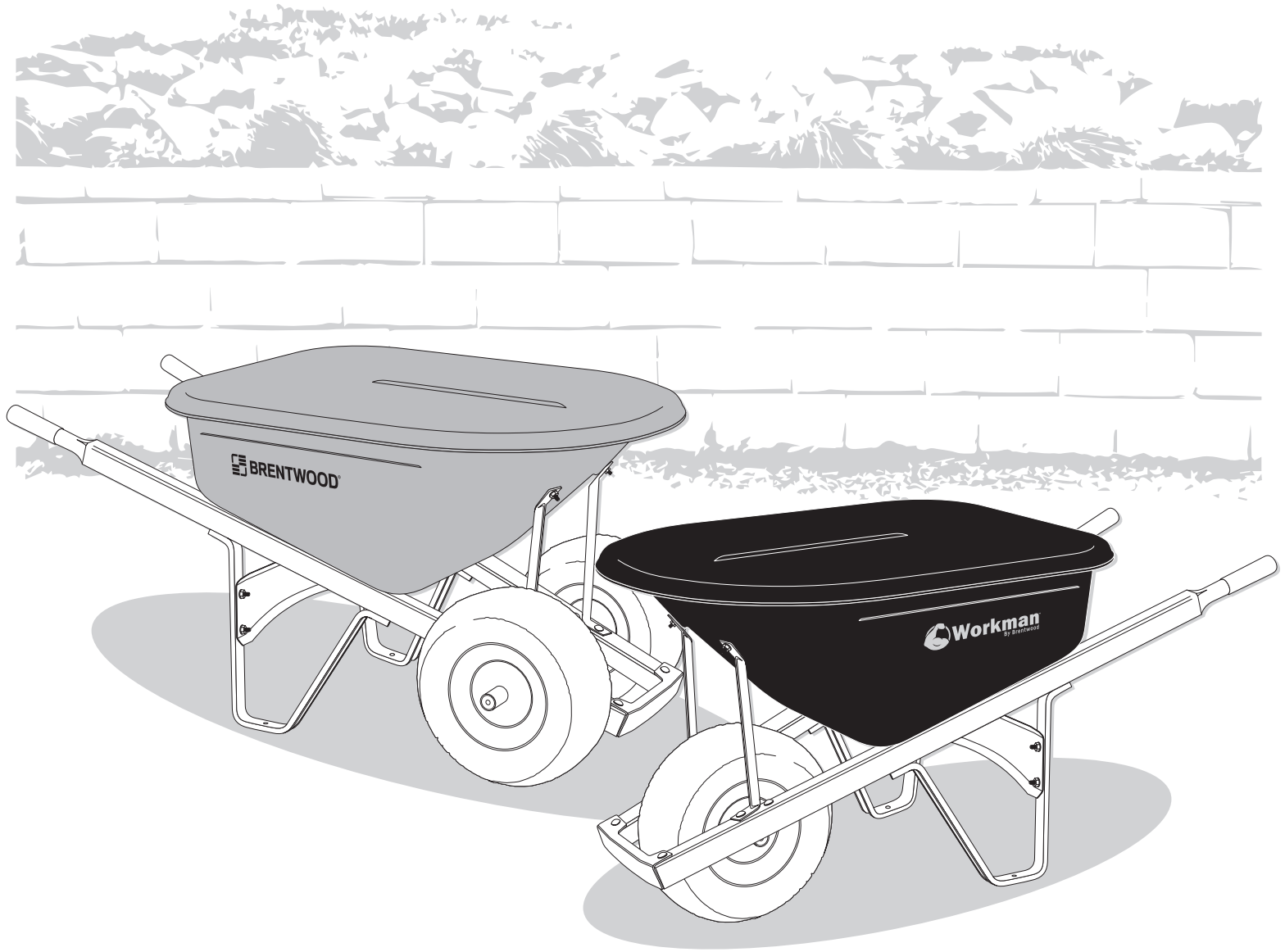
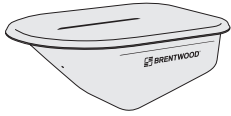


BRENTWOOD®



Single- & Double-Wheel Poly **WHEELBARROW ASSEMBLY**

YOUR KIT SHOULD INCLUDE:



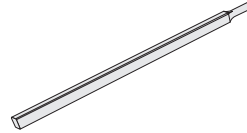
A. Pan (x1)



BL. Left Front Brace (x1)



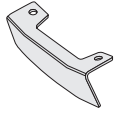
BR. Right Front Brace (x1)



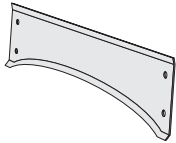
C. Handle (x2)



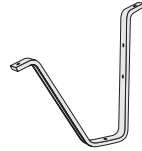
D. Handle Grip (x2)



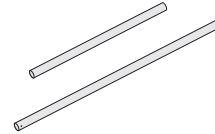
E. Nose Piece (x1)



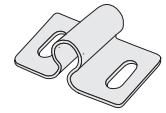
F. Leg Brace (x1)



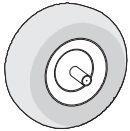
G. Leg (x2)



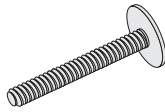
H1. Single-Wheel Axle (x1)
H2. Double-Wheel Axle (x1)



I. Axle Bracket (x2)



J. Tire (x1)
Double-Wheel Models (x2)



K. 5/16" - 18 x 3"
Elevator Bolt (x4)



L. 5/16" - 18 x 3"
Carriage Bolt (x6)



M. 5/16" - 18 x 7/8"
Elevator Bolt (x2)



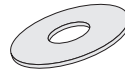
N. 5/16" - 18 x 3/4"
Slotted Truss Bolt (x4)



O. 5/16" - 18
Serrated Flange
Hex Nut (x16)



P. 1/8" - 1.25"
Cotter Pin (x2)



Q. 3/4"
SAE Flat Washer (x2)

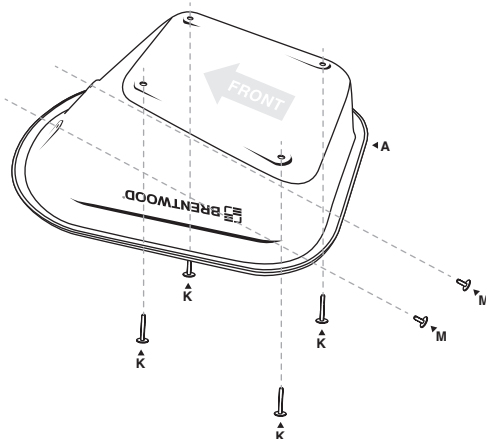
TOOLS NEEDED:

1. 1/2" or 13mm Wrench
2. Flat Head Screwdriver

3. Hammer
4. Needle Nose Pliers

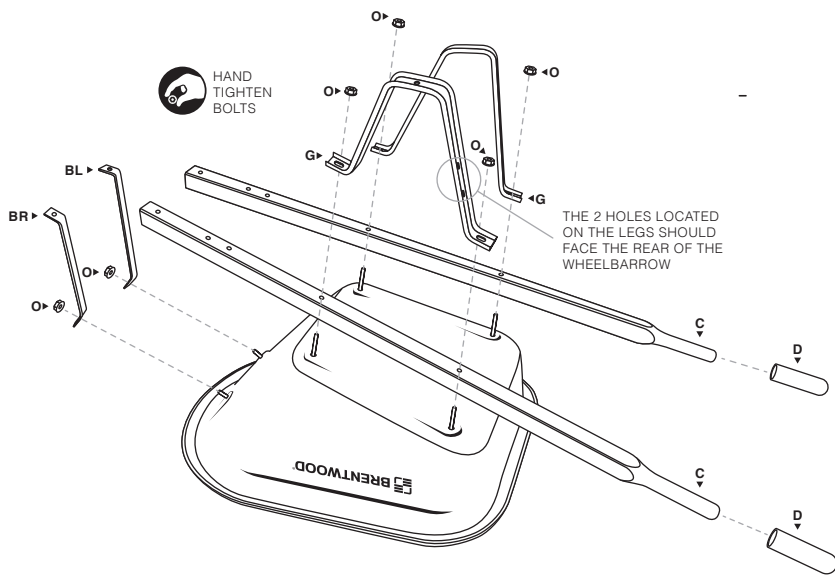
5. Safety Glasses

Thank you for your purchase! If you have any questions or encounter any problems with your Brentwood Wheelbarrow, feel free to call us at 1.610.374.5109 or e-mail wheelbarrow@brentw.com.



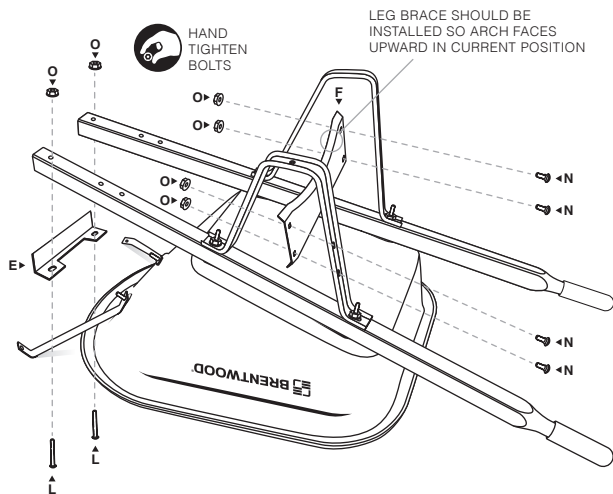
STEP 1

Holding the **PAN (A)** on its side, use a hammer to tap the four (4) **18 x 3" ELEVATOR BOLTS (K)** through the bottom and the two (2) **18 x 7/8" ELEVATOR BOLTS (M)** through the front so they protrude facing outward. NOTE: Tapping the bolts firmly in place allows them to penetrate the poly pan and stay in place for Step 2. Next, position the pan upside down so the bottom is facing upward.



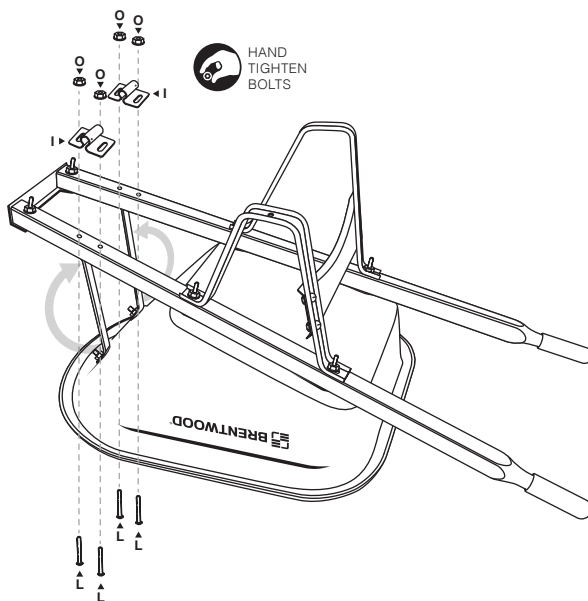
STEP 2

Slide the **HANDLES (C)** over the bolts installed in the pan. Then, place the **LEGS (G)** over the handles and align them to the existing bolts. Secure them by hand tightening four (4) **SERRATED FLANGE HEX NUTS (O)**. **NOTE:** Hand tightening bolts at this stage allows flexibility throughout the assembly. Next, slide the two (2) **HAND GRIPS (D)** onto the handles. Finally, take the **LEFT FRONT BRACE (BL)** – stamped with an “L” – and align it to the bolt inserted in the hole at the front of the pan, also stamped with an “L”. Repeat this step for the **RIGHT FRONT BRACE (BR)**, stamped with an “R”, and secure the braces by hand tightening two (2) **SERRATED FLANGE HEX NUTS (O)** to the bolts. **DO NOT** attach the front braces to the handles until Step 4.



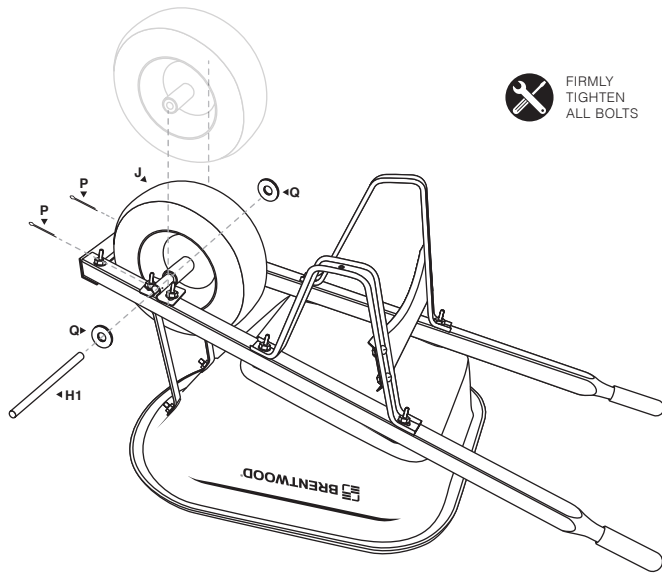
STEP 3

Align the holes on the flat side of the **LEG BRACE (F)** to the holes on the inside of each leg and secure by hand tightening the **SLOTTED TRUSS BOLTS (N)** and **SERRATED FLANGE HEX NUTS (O)** into the four holes. The bolt heads should face the rear of the wheelbarrow. Next, place the **NOSE PIECE (E)** onto the front of the handles with the flat side facing forward. The portion with the holes should be beneath the handles in its current position; this will assure the nose piece is mounted over the top and front sides of the handle edges when upright. Next, secure the nose piece by hand tightening two (2) **CARRIAGE BOLTS (L)** and **SERRATED FLANGE HEX NUTS (O)**.



STEP 4

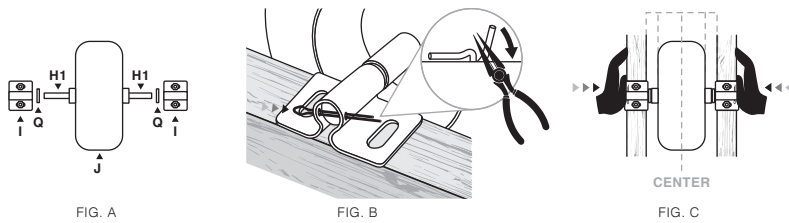
Swing the left and right front braces to align the free ends with the remaining holes in the handles. Using the four (4) remaining **CARRIAGE BOLTS (L)**, insert each bolt from the bottom up to secure the front braces, handles, and two (2) **AXLE BRACKETS (I)**. Hand tighten using four (4) **SERRATED FLANGE HEX NUTS (O)**. The axle brackets should allow for some flexibility at this stage of the assembly.



STEP 5 (SINGLE WHEEL)

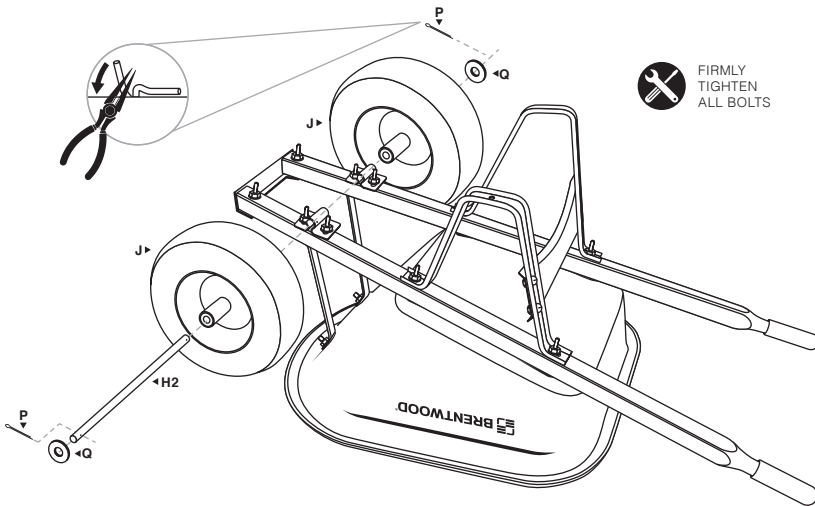
When constructing the wheel assembly, an additional person may be needed to hold the tire in place. Slide the **AXLE (H1)** through the mounted axle bracket. In this order, continue to slide the axle through the first **SAE FLAT WASHER (Q)**, the **TIRE (J)**, the second **SAE FLAT WASHER (Q)**, and finally, through the second axle bracket (FIG. A). Next, insert both **COTTER PINS (P)** through the holes located on each of the axle brackets and bend each end using needle nose pliers (FIG. B). To secure the wheel assembly, push both axle brackets inward to center the wheel and make sure all parts are flush together (FIG. C). Finally, firmly tighten all bolts in place using a hand tool.

WHEEL ASSEMBLY DETAIL

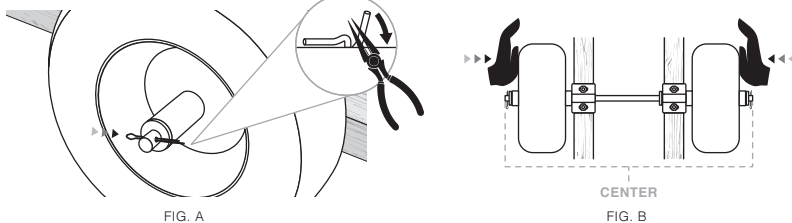


STEP 5 (DOUBLE WHEEL)

Slide the **AXLE (H2)** through the mounted axle brackets and center. Then, on each side, slide on a **TIRE (J)** and a **SAE FLAT WASHER (Q)**. Next, insert both **COTTER PINS (P)** through the holes located on each end of the axle and bend each end using needle nose pliers (FIG. A). To secure the wheel assembly, push both axle brackets outward and make sure all parts are flush and aligned together (FIG. B). Finally, firmly tighten all bolts in place using a hand tool.



WHEEL ASSEMBLY DETAIL



IMPORTANT: Once you have completed the previous steps, be sure to tighten all bolts and fasteners using a hand tool. You are now ready to enjoy your Brentwood Wheelbarrow!